



WWW.BARRYIND.COM

# RP2512CB-25R0KN-96

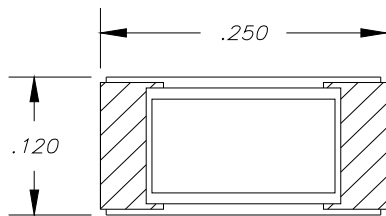
## BeO Material SURFACE MOUNT RESISTOR

### Features:

- ◆ BeO Material
- ◆ CB = Tin Lead over Nickel over Silver
- ◆ Wrap around

### General Description:

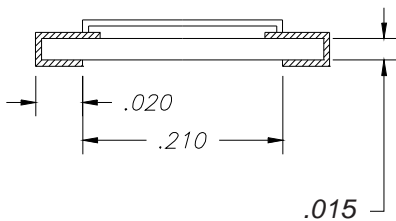
The RP2512CB-25R0KN-96 is a 25 ohm standard wrap around resistor on BeO. It offers a small package design.



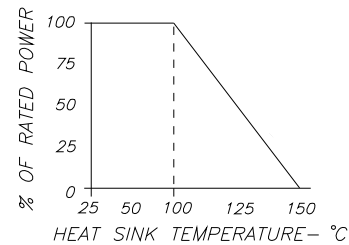
METALIZED AREAS =



MOUNTING SURFACE TO HEAT SINK



DERATING CURVE:



Parameter	Min.	Typ.	Max.	Units
Resistance Tolerance	22.5	25	27.5	%
Input Power			10	Watts
Heat Sink Temperature			100	°C

Barry Industries reserves the right to change part number and or process without notification

Barry Industries, Inc., 60 Walton St., Attleboro, MA 02703 T: 508-226-3350 F: 508-226-3317 E-mail: ABSales@Vishay.com

Barry Industries maintains an ISO 9001 Certified Quality Management System

Origination Date	Revision Date	Rev.
11/19/12	11/19/12	-